

OpteraPro[®]

Highly Effective Pest Control Alternative

For commercial ornamental nurseries and greenhouses, OpteraPro Insecticide provides long-lasting protection against a wide range of insect pests, including foliar pest like aphids, clearwing and peachtree borers, lace bugs, leaf-feeding caterpillars, sawfly larvae, adult Japanese beetles, and soil-dwelling white grubs. OpteraPro stops insect damage and preserves plant quality through rapid and effective pest control. OpteraPro acts quickly, stopping feeding within minutes of ingestion, while being gentle on beneficial insects. With flexible application rates and timing, OpteraPro is essential for Integrated Pest Management (IPM) and resistance management programs.

COMPETITIVE ADVANTAGES

- Soft on beneficials
- Optimal IPM tool where beneficial insects are employed
- Versatile resistance management tool
- Flexible application options including foliar sprays, bark treatments or soil drench applications
- Foliar sprays offer up to four weeks residual control, saves time and labor on repeat applications
- Root absorption and systemic upward translocation protects the plant from soil dwelling white grubs and foliar pests like aphids and lace bugs
- Versatile window of application timing and rates across multiple crops
- Highly effective alternative to neonics and pyrethroids

AT-A-GLANCE INFO

EPA REG. NO.	228-768
ACTIVE INGR.	chlorantraniliprole (1.69 lb/gal)
FORMULATION	suspension concentrate
CHEM. FAMILY	anthranilic diamide
IRAC NO.	28
REI	4 hours
SIGNAL WORD	none
PACKAGE SIZE	4 x 1 qt tip-n-measure, 4 x 1 gal

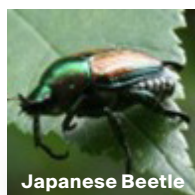
OPTIMIZED FOR GREENHOUSES & NURSERIES



Aphids



Lace Bug



Japanese Beetle

OpteraPro®

KEY USES

Commercial ornamental nurseries and greenhouses; hoop houses, lath houses, nurseries (indoor and outdoor, field-grown and containerized), shade houses
Ornamentals; bulbs, evergreens (including conifers), flowering and foliage plants, grasses, ground covers, palms, pot and bedding plants, shrubs, succulents, woody ornamental plants and trees (including non-bearing fruit and nut trees), vines

KEY PESTS CONTROLLED

(See product label for complete list)

FOLIAR PESTS

Aphids*
Caterpillars:
bagworm
birch leafminer*
fall webworm
gypsy moth
tussock moth
zimmerman
pine moth
Japanese beetle (adult)
Lace bugs*
Sawfly (larvae)

WHITE GRUBS

Asiatic garden beetle
European chafer
Green June beetle
Japanese beetle
May/June beetles
Northern masked chafer
Oriental beetle
Southern masked chafer

*Systemic soil treatments

RESISTANCE MANAGEMENT

For managing resistance, this product is a Group 28 insecticide. Some insects might naturally be resistant to this product and other Group 28 insecticides. If you use this type of insecticide repeatedly in the same area, the resistant insects could become more common. It is important to follow good resistance-management strategies.

USE SUMMARY

TANK MIXING

OpteraPro is compatible with many other pesticides and liquid fertilizers, but it's important to ensure the physical compatibility of the mixture. Prepare a mix on a small scale (such as a pint or quart jar) using the proper proportions of the tank mix products and water.

In some situations where coverage is difficult to achieve such as closed canopy, dense foliage, plants with waxy leaf surfaces, or less than optimum application equipment, an adjuvant may improve performance. Use only adjuvant products that are labeled for use and follow the directions on the manufacturer's label. Always conduct a premix test for compatibility.

APPLICATION RATES

FOLIAR APPLICATIONS - 1-16 fl oz/100 gal

Caterpillars, Japanese beetle (adult), sawfly (larvae)

Apply preventatively or after caterpillars have been observed. Repeat treatment to maintain control using the higher listed application rates as pest pressure and foliage area increases.

Mix this product with the required amount of water and apply as a full-coverage foliar spray. When applying to hard-to-wet foliage, such as holly, pine, or ivy, the addition of a spreader/sticker is recommended. If concentrate or mist-type spray equipment is used, apply an equivalent amount of product as would be used in a dilute application.

SYSTEMIC SOIL TREATMENTS - 0.0625-0.25** fl oz

Aphids (incl. apple aphid), lace bugs, birch leafminer

When applying soil treatments to woody plants, the active ingredient may take 60 days or more to spread throughout the plant. Apply before pests appear for best results.

Application can be made by soil injection, soil drenches, and broadcast sprays. Apply this product within 1-3 feet of the root flare of trees and shrubs. Apply product in sufficient water volume to reach the root zone for optimal systemic uptake. Refer to label Mixing Charts for Soil Application for additional information on soil injection and soil drench applications.

**per inch DBH of tree or per foot of height of shrub

SOIL APPLICATION FOR WHITE GRUBS - 0.18-0.37 fl oz/1000 sq ft Beetles

Apply immediately prior to egg hatch. The need for an application can be determined by historical site monitoring, past records or experiences, current season adult trapping, or other methods.

Apply using 1-2 pts water or greater per sq ft of soil surface. Irrigate immediately after application or allow rainfall to move the product into the soil.