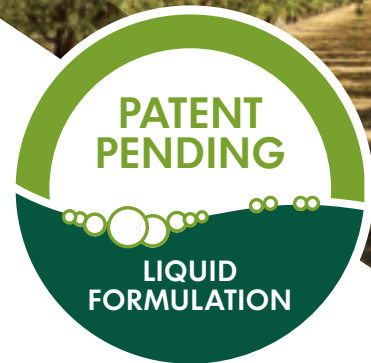


Tuscany[®] SC

SELECTIVE HERBICIDE



STAY WEED-FREE WITH LIQUID TUSCANY[®] SC.

Now in a convenient liquid formula, the tree, nut and vine specialist, Tuscany[®] SC Herbicide blocks more than 60 tough weeds with long-lasting residual control. Liquid Tuscany SC stays where you put it, with low leaching or volatilization potential. Plus, it offers excellent rotational flexibility. For proven crop safety and dependable control in various weather conditions, count on Tuscany SC.

COMPETITIVE ADVANTAGES

BROAD SPECTRUM

- Controls a broad spectrum of annual broadleaf and grass weeds, including most broadleaf weeds resistant to glyphosate
- Convenient new liquid formulation makes mixing and loading faster and easier
- Enhances burndown of existing weeds when tank-mixed with Cheetah[®] (glufosinate) or Credit[®] Xtreme (glyphosate)

LONG LASTING

- Offers residual control in tree fruit, nut and grapes to keep vineyards and orchard floors clear for months
- Flexible rotation options allow you to pick the crop that maximizes your profits

LOW LEACHING OR VOLATILIZATION POTENTIAL

- At least ¼ inch rainfall or irrigation required to release activity

AT-A-GLANCE INFO

EPA REG. NO.	71368-113
ACTIVE INGR.	flumioxazin (44.0%) (4 lb per gallon)
FORMULATION	liquid
CHEM. FAMILY	N-phenylphthalimide
GROUP NO.	14
MODE OF ACT.	PPO inhibitor
REI	12 hours
SIGNAL WORD	none
RESTRICTED	no
PACKAGE SIZE	64 oz container (4 per case), 2.5 gal container (2 per case)

SAME RATE, SAME POWER

RATES ARE EQUIVALENT TO WDG FORMULATION:
1 oz Tuscany WDG = 1 fl oz Tuscany SC

MORE PRODUCTS EXCLUSIVELY FROM NUFARM

Agri-Mycin[®] 50



Phostrol[®]

 **Nufarm**
Grow a better tomorrow

Tuscany® SC

STAY WEED-FREE WITH LIQUID TUSCANY® SC.

KEY USES

Many crops including; almond, grape, mint, pistachio, potato, non-bearing fruit and nut trees, fallow land and to maintain bare ground on non-crop areas of farms, orchards and vineyards

KEY WEEDS CONTROLLED

(See product label for complete list)

Chickweeds (common)
 Dandelion
 Filaree
 Groundsel (common)
 Henbit
 Johnsongrass (seedling)
 Lambsquarters (common)
 Little mallow
 London rocket
 Marestail/horseweed
 Mustard (wild)
 Nightshades (black)
 Pigweeds (redroot)
 Prickly lettuce
 Puncturevine
 Purslane (common)
 Radish (wild)
 Redmaids
 Shepherd's-purse
 Sowthistle (annual*, prickly)
 Waterhemp (common, tall)

PROVIDES ACTIVITY ON:

Barnyardgrass
 Bluegrass (annual)
 Crabgrass (large)
 Lovegrass (California)
 Panicums (fall)
 Ryegrass (Italian)
 Russian thistle
 Smartweeds

*Not for use in California

USE SUMMARY – ROTATION OPTIONS

VINEYARDS AND ORCHARDS

RATE	CROP	ROTATIONAL INTERVAL
6 to 12 fl oz/A	Trees can be transplanted 2 months after an application of this product ¹	18 mths (no tillage)

¹Transplanted apple, apricot, avocado, bushberries (including blueberry), cherry, fig, grape, grapefruit, lemon, nectarine, nut trees (including pistachio), olive, orange, peach, pear, plum (including dried plum), and tangerine can be planted 2 months after application of 2 to 12 oz/A of this product.

PRE-EMERGE: Pre-emerge applications should be made to a weed-free soil surface.

BURN DOWN: For best results, tank mix with a burn down herbicide.

TIMING: For best results, apply twice per year. Apply after harvest and before bud break.

SPRAY VOLUME: Minimum of 15 gal of spray solution per acre.

ADJUVANT: Per recommendation of tank mix partner.

POTATO

RATE	CROP	ROTATIONAL INTERVAL
1.5 fl oz/A	Potatoes	Consult Product Label

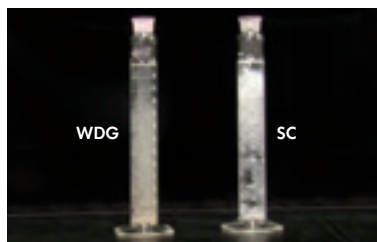
DO NOT apply more than 1.5 fl oz of Tuscany SC per acre during a single application. DO NOT apply more than 1.5 fl oz of Tuscany SC per acre during a single growing season. DO NOT apply to hill (furrow) irrigated potatoes. Many weather related factors, including high wind, splashing or heavy rains or cool conditions at or near potato emergence may result in potato injury in fields treated with Tuscany SC.

PRE-EMERGE: Apply to soil covered potatoes for pre-emerge suppression.

TIMING: Apply to potatoes after hilling. Tank mix with other labeled herbicides for broad spectrum weed control. A minimum of 2 inches of soil must cover the vegetative portion of the potato plant at the time of application. Application to potatoes with less than 2 inches of soil covering the vegetative portion of the potato may result in crop injury.

TUSCANY® SC BLOOMS AND MIXES EASILY AND STAYS IN SUSPENSION

Unlike WDG formulations, liquid Tuscany SC blooms quickly and mixes easily. With only slight agitation, Tuscany SC mixes evenly and completely. Plus, it stays in suspension longer – even after two hours without agitation, Tuscany SC shows no signs of settling.



Liquid Tuscany SC (right) goes into suspension quickly – allowing for easier mixing and less settling than WDG formulation (left)



Even after two hours, Tuscany SC stays in suspension

See label for complete directions for use, including chemigation application rates and directions for use on potatoes.



nufarm.com/uscrop

For specific application rates, directions, mixing instructions and precautions, read the product label. Please visit www.nufarm.com/uscrop to download a full label.

©2019 Nufarm. Important: Always read and follow label instructions. Agri-Mycin®, Cheeath®, Credit®, Grapple™ Phostrol® and Tuscany® are trademarks of Nufarm

