

# Tank mix for longevity of pre-emergent chemistry

2018 trial results demonstrate true benefit of Avadex® Xtra

“Rotating buys you time, mixing buys you shots”

– Pat Tranel, university of Illinois 2006

“Mixing herbicides is better than rotating herbicides and can double the longevity”

– Dr. Roberto Busi from AHRI (Australian Herbicide Resistance Institute)

Resistance will evolve to all herbicides, and you only have a certain amount of “shots”. For example, if you have a particular herbicide where resistance typically evolves after ten shots, then using it every second year will buy you some time, but resistance will still happen after ten shots over 20 years. Mixing this herbicide with full rates of another herbicide will buy you some extra shots.

## Using Avadex Xtra as a mix partner for exceptional ryegrass control

- Avadex Xtra provides the best tank mix partner for ryegrass control
- Sakura® with Avadex Xtra has shown to be consistently the best mix for ryegrass control in wheat
- Avadex Xtra has shown excellent crop safety and can be used with complete confidence at rates up to 3.2L/ha across wheat, barley, triticale, pulses and canola

## Avadex Xtra is the ideal mix partner with all other pre-emergent groups of chemistry

- Avadex Xtra can be applied immediately before seeding or up to 3 weeks before depending on soil conditions (see label for details)
- Avadex Xtra has wide compatibility with a range of products including Sakura, TriflurX®, Boxer Gold® and Atradex®



## Rotate between the three pre-emergent groups of herbicides

- Group D – TriflurX or Propyzamide
- Group K – Sakura (pyoxasulfone)
- Group J – Avadex Xtra (Triallate) or Prosulfocarb

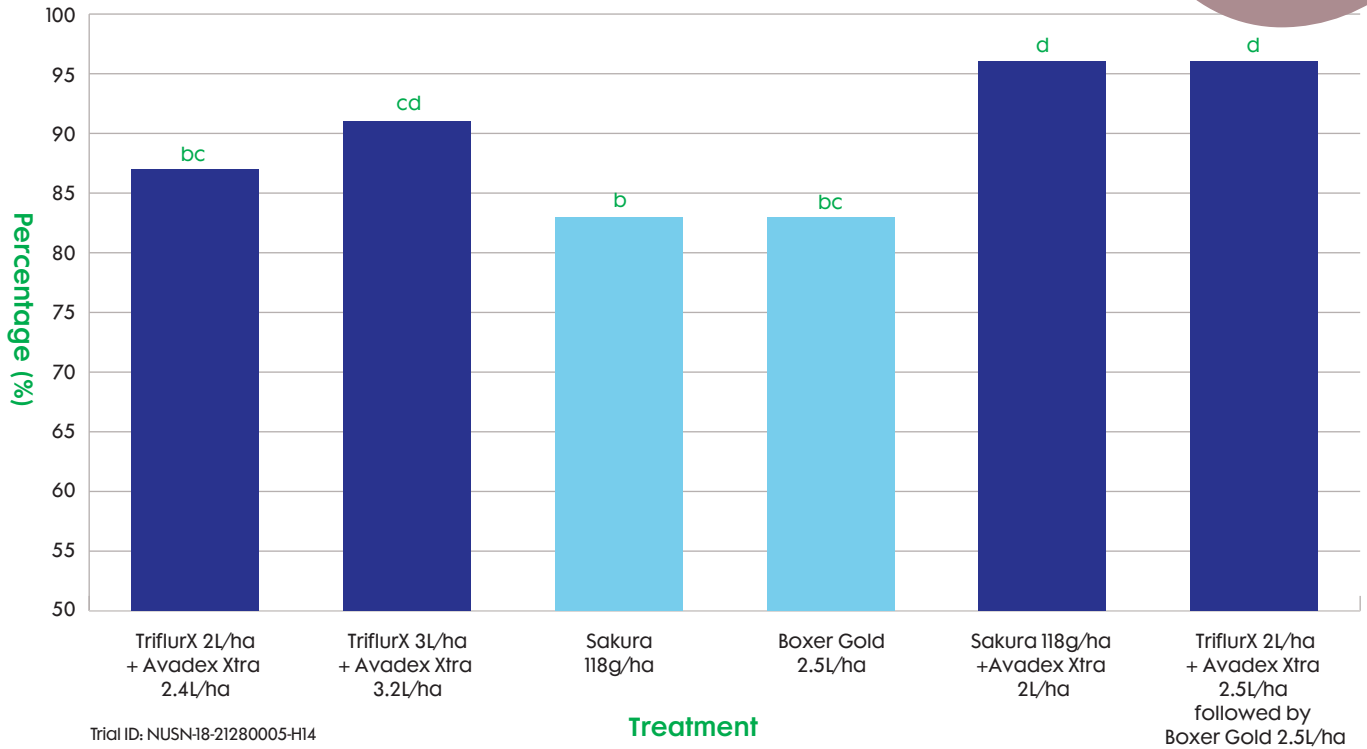
## Avadex Xtra properties increase effectiveness

1. Once incorporated, TriflurX + Avadex Xtra turn into a gaseous vapour filling the pore spaces within soil, this vapour is then absorbed by germinating weeds, inhibiting growth by acting under low soil moisture
2. Avadex Xtra enters the weeds predominately via shoot uptake – this offers complimentary uptake with other mix partners that are predominately root uptake

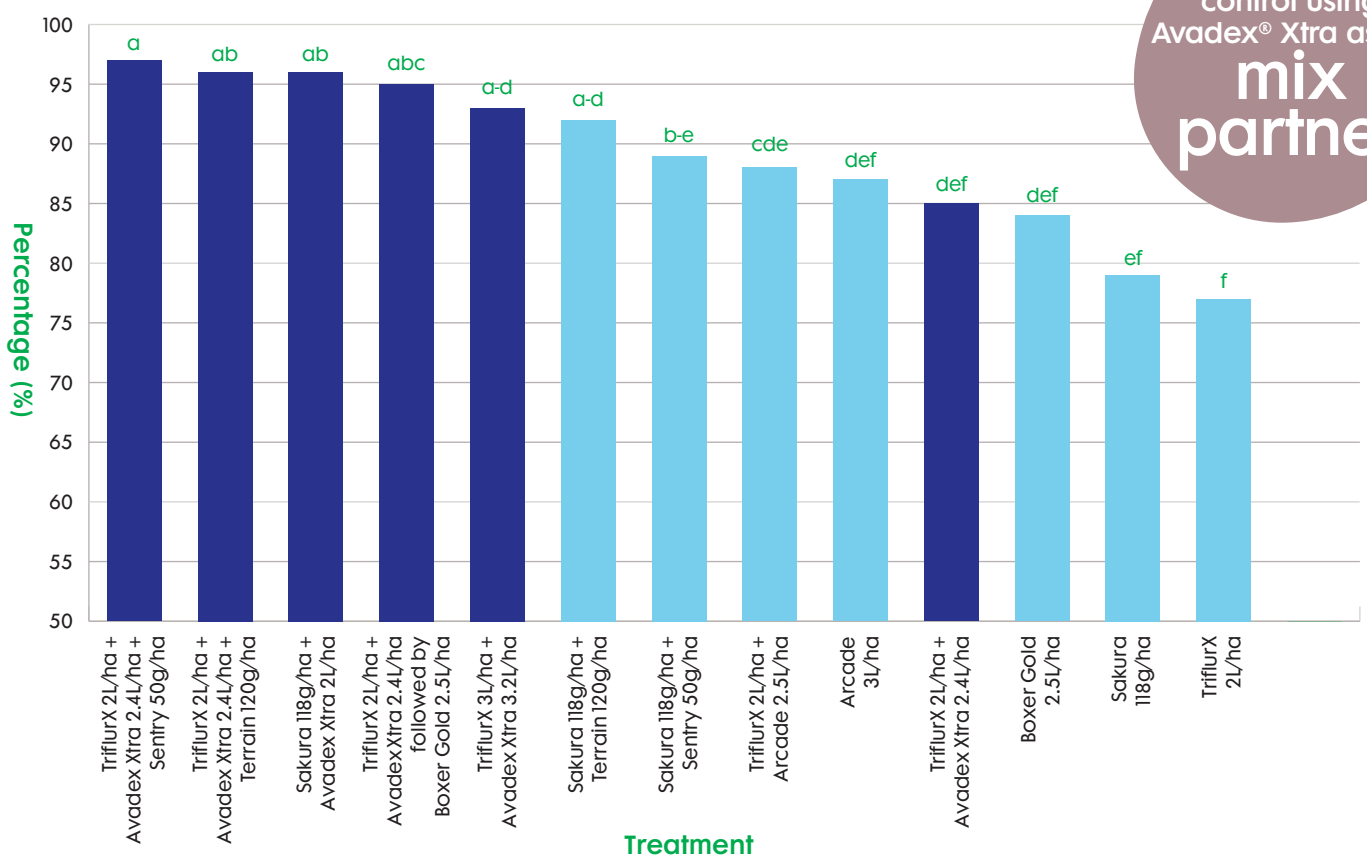
# Trial Results prove effectiveness

The addition of Avadex® to Sakura greatly increases control

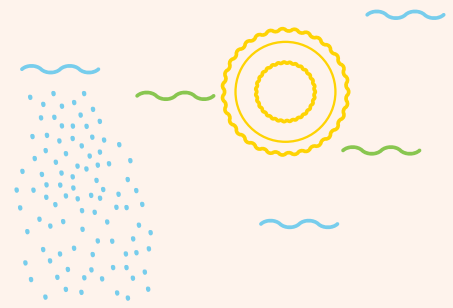
Graph 1. SNSW 2018  
Annual Ryegrass % control



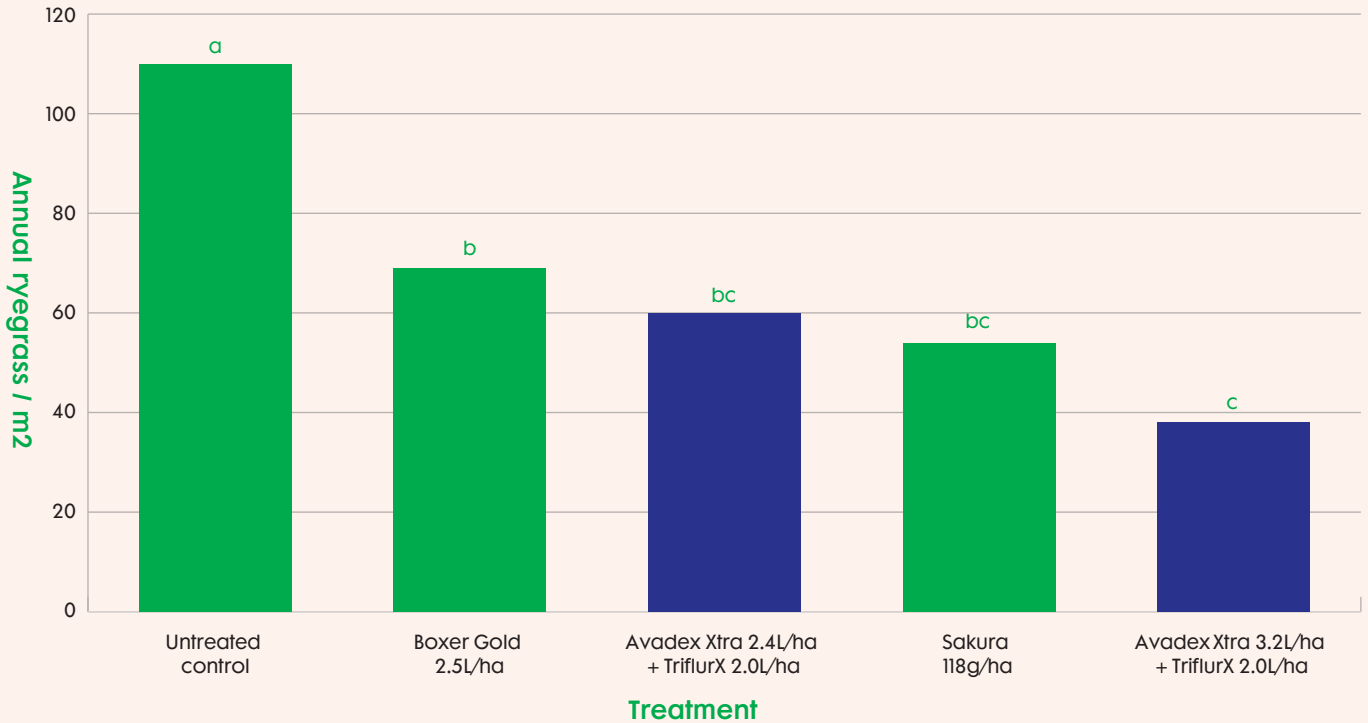
Graph 2. SNSW 2018 (dry sown)  
Annual Ryegrass % control



Improve control using Avadex® Xtra as the mix partner

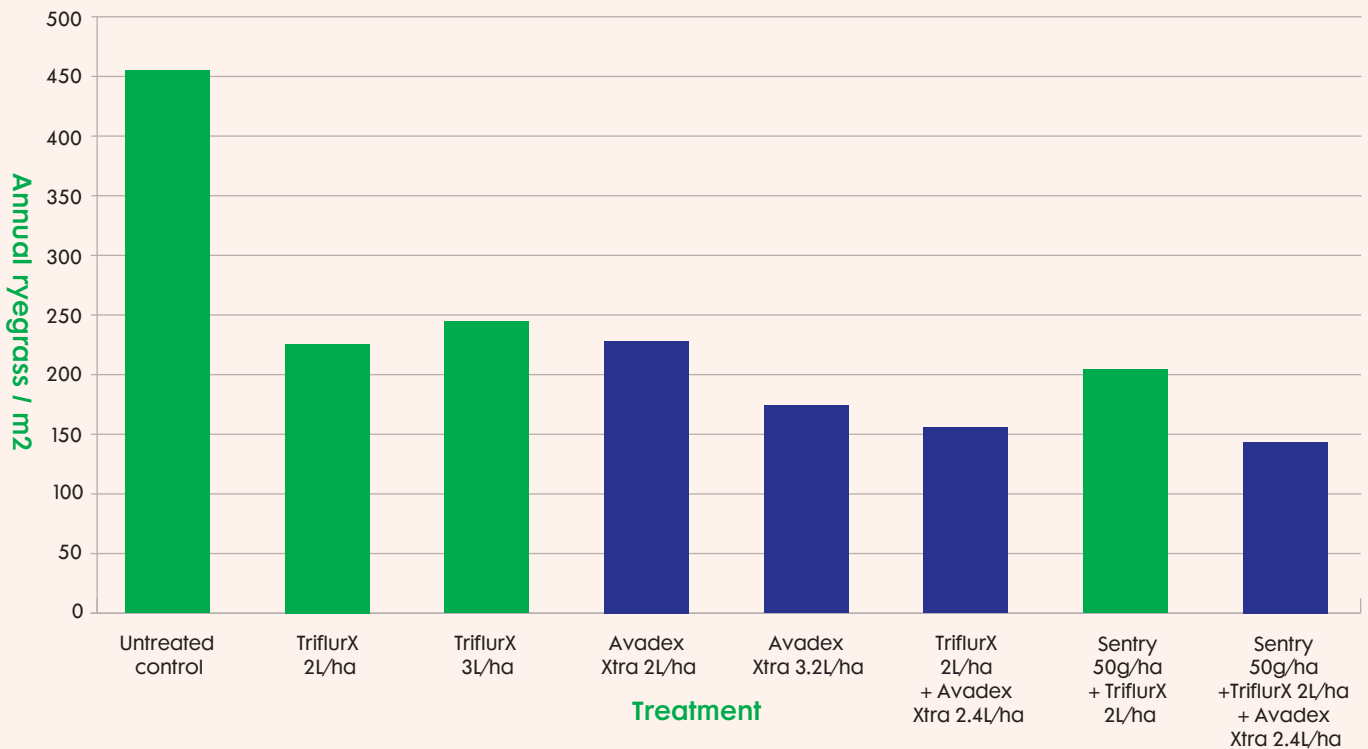


Graph 3. South Australia 2018  
Annual Ryegrass plants per m<sup>2</sup>

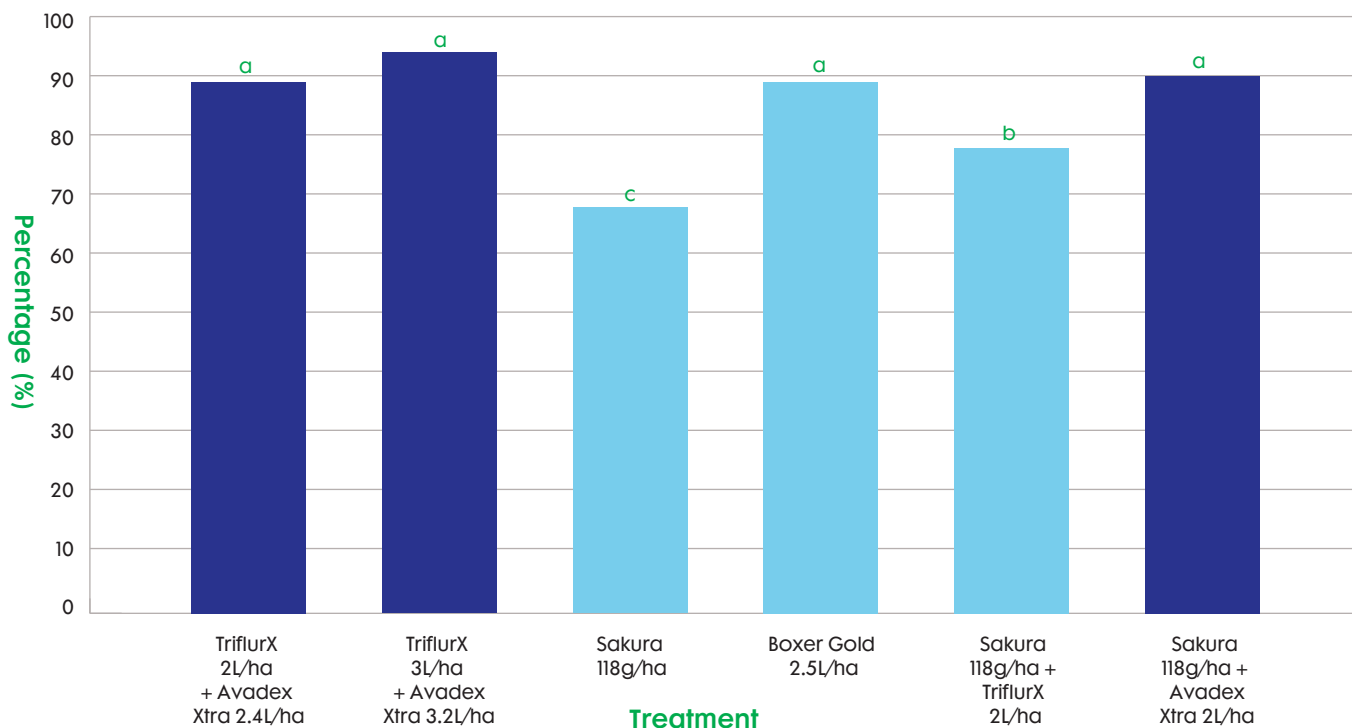


Trial ID: NUSN18-21280005-H09

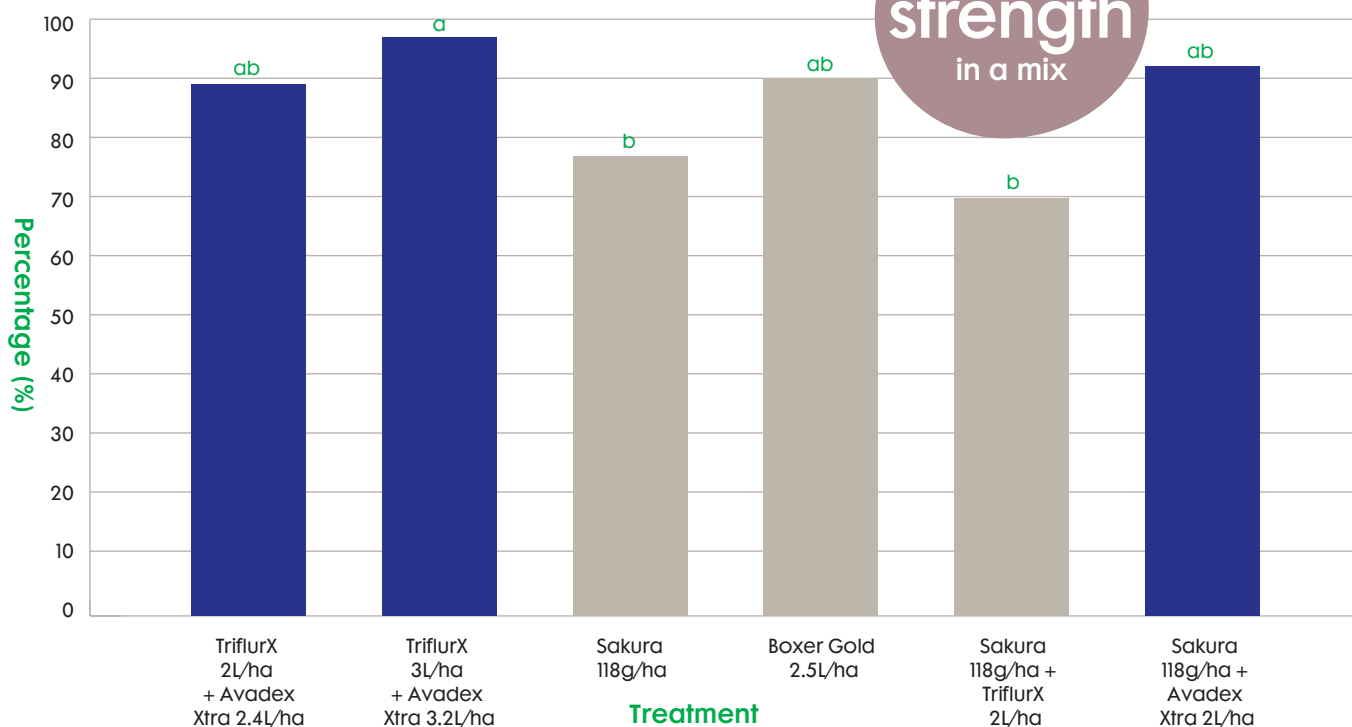
Graph 4. BCG (Birchip Cropping Group) VIC 2018  
Annual Ryegrass plants per m<sup>2</sup>



Graph 5. NSW 2018  
Annual Ryegrass % control



Graph 6. NSW 2018  
Wild Oat % control



The information and recommendations set out in this brochure are no substitute for professional or expert advice and are based on tests and data believed to be reliable at the time of publication. Results may vary, as the use and application of the products is beyond our control and may be subject to climatic, geographical or biological variables, and/or developed resistance. To the maximum extent permitted by law, Nufarm Australia Limited disclaims all warranties of any kind, whether express or implied, including but not limited to any warranty that the information is up-to-date, complete, true, legally compliant, accurate, non-misleading or suitable.

For more information, visit [nufarm.com.au](http://nufarm.com.au)



© 2019 Nufarm Australia Ltd. © trademarks are owned by Nufarm Australia Ltd or used under licence. Sakura is a registered trademark of Bayer Crop Science, Boxer Gold and Arcade are registered trademarks of Syngenta.

 **Nufarm**  
Grow a better tomorrow