

Protection from seed to sale

The complete techguide

Nufarm
Bromicide[®] 200
SELECTIVE HERBICIDE



How to guide

- Label extract
- Mode of action
- Application timing and guidance
- Other susceptible weeds

Bromicide 200 provides effective weed control in Sorghum

Cowvine or Peachvine (*Ipomoea lonchophylla*) and Bellvine (*Ipomoea plebeia*) are two problematic weeds in grain sorghum. Bromicide® 200 provides growers with a very effective tool to control these two weeds. Bromicide® 200 can be mixed with Atradex® to effectively control a wider range of weed as per the label extract below.

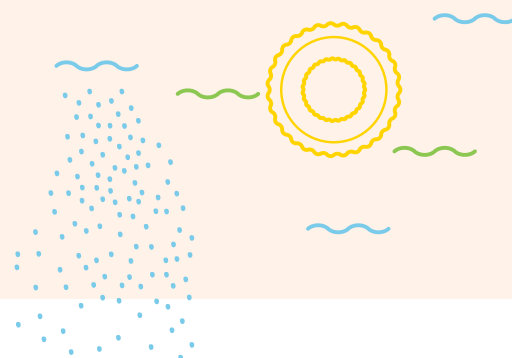


Table 1 – Label extract from Bromicide 200 label (Grain Sorghum)

Weeds Controlled	Weed Stage	Rate	State	Critical Comments
Cowvine or Peachvine (<i>Ipomoea lonchophylla</i>), Bellvine (<i>I. plebeia</i>)	Up to 4 leaves	1.5L/ha	Qld, NSW only	<p>CROP STAGE: 4-12 leaf stage. This product may cause transient leaf burn of some sorghum varieties.</p> <p>APPLICATION: Beyond the 6-8 leaf stage of the crop, dropped nozzles should be used to minimize chemical being sprayed into the whorl and on upper leaves of the crop and to reduce shading of weeds. Use on small weeds early in the crop life to prevent shading out of the weeds. Spray when weeds are actively growing and not when drought stressed. Use a minimum spray volume of 70L/ha.</p>
Cowvine or Peachvine (<i>Ipomoea lonchophylla</i>)	4-8 leaves	2L/ha		
Cowvine or Peachvine (<i>Ipomoea lonchophylla</i>), Bellvine (<i>I. plebeia</i>), Morning glory (<i>I. Purpurea</i>), Bladder Ketmia (<i>Hibiscus trionum</i>), Annual ground cherry (<i>Physalis angulata</i>), Fierce thornapple (<i>Datura ferox</i>), Anoda weed (<i>Anoda cristata</i>)	Up to 4 leaves	1.5L/ha PLUS 1.1kg/ha Atradex	Qld, NSW only	<p>CROP STAGE: 4-12 leaf stage. This product may cause transient leaf burn of some sorghum varieties.</p> <p>APPLICATION: Beyond the 6-8 leaf stage of the crop, dropped nozzles should be used to minimize chemical being sprayed into the whorl and on upper leaves of the crop and to reduce shading of weeds. Use on small weeds early in the crop life to prevent shading out of the weeds. Spray when weeds are actively growing and not when drought stressed. Use a minimum spray volume of 70L/ha.</p> <p>Add a non-ionic surfactant. DO NOT use on sandy soils.</p>
	4-8 leaves	2L/ha PLUS 1.1kg/ha Atradex		

Mode of Action

Bromoxynil is a member of the nitriles group of herbicides (Group C) and acts on susceptible plants by inhibiting photosynthesis. Bromoxynil is essentially a contact herbicide and although it is absorbed through leaves, it has limited translocation and mobility due to its rapid speed of action. Plant symptoms show rapid chlorosis followed by desiccation or leaf burn within 2 to 3 days of treatment.



Application Guidance

- Beyond 6-8 leaf crop stage of the sorghum, droppers should be used to limit chemical being sprayed into the whorl and upper leaves, as this may result in yield reduction. Additionally, weeds shaded by the upper canopy may result in decreased efficacy of Bromicide® 200 on target weeds.
- Best results will be obtained from spraying smaller weeds, which are actively growing and not impacted by moisture stress.
- Using a minimum volume of 70L/ha as stipulated on the label will provide best result. Understanding the mode of action highlights the importance of coverage when using Bromicide® 200 in grain sorghum, its all about coverage.
- Nufarm trials have shown good control using a COARSE spray quality (ASAE standard S-572).
- Aerial application can be made, apply in a minimum of 22L of water per hectare.
- Bromicide® 200 can cause localised burning of some crop leaves. However, the crop quickly recovers, and grain yield is not affected.

Application Timing

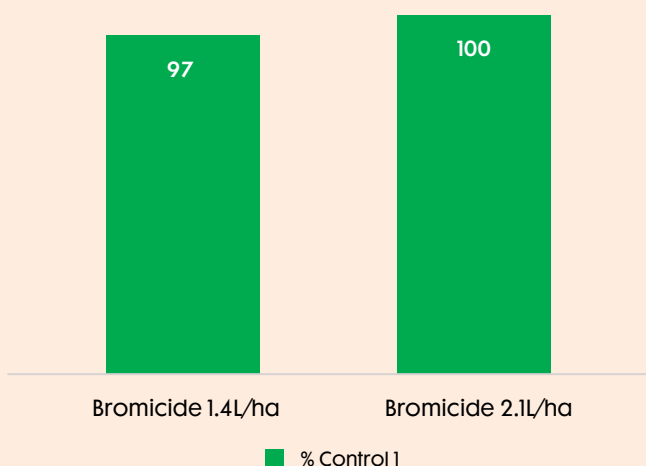
For Fallow or pre-plant situations – Bromicide® 200 can be mixed with weedmaster DST to provide excellent knockdown of weeds including Cowvine, climbing buckwheat, milk thistle, sowthistle and volunteer roundup ready cotton. Bromicide® 200 has no plant back restriction which allows sowing of summer crops in a timely fashion. For more information, visit nufarm.com.au/product/bromicide-200

- Bromicide® 200 is registered in grain sorghum from 4-12 leaf stages.
- Bromicide® 200 can be used at 1.5L/ha for weeds up to 4 leaves and 2L/ha for weeds 4-8 leaves in size.
- It can be tank mixed with 1.1kg of Atradex (atrazine) to increase the weed spectrum and provide residual weed control, please refer to the Atradex label.



Other Susceptible Weeds

% sowthistle Control 15 DAA



Bromicide 200 controls a wide range of weeds. Weeds controlled in other situations include sowthistle, Caltrop (yellow vine), wireweed, black bindweed, fat hen, volunteer cotton and fireweed. Check the Bromicide 200 label for the full details on crops and weeds.

Sow thistle control in Fallow Trial NSQ09-83.01-H0

Sowthistle control Bromicide 1.5 L/ha 8 DAA



Sowthistle control in Sorghum – Bromicide at 1.5 L/ha 8 DAA

*The information and recommendations set out in this brochure are no substitute for professional or expert advice and are based on tests and data believed to be reliable at the time of publication. Results may vary, as the use and application of the products is beyond our control and may be subject to climatic, geographical or biological variables, and/ or developed resistance. To the maximum extent permitted by law, Nufarm Australia Limited disclaims all warranties of any kind, whether express or implied, including but not limited to any warranty that the information is up-to-date, complete, true, legally compliant, accurate, non-misleading or suitable.

©2019 Nufarm Australia Ltd. Bromicide® 200 is a registered trademark of Nufarm Australia Ltd. All other trademarks (®,™) are owned by Nufarm Australia Ltd or used under license.

Please refer to respective product labels for registered uses in specific crops.

For more information on Bromicide® 200 contact your local Nufarm Territory Manager.

   nufarm.com.au

 **Nufarm**
Grow a better tomorrow