

TECHNOTE

FOR THE CONTROL OF REDLEGGED EARTH MITE IN CLOVER AND LUCERNE AT THE BARE EARTH STAGE

Farmers know the damage redlegged earth mite (*Halotydeus destructor*) can cause to newly emerging clovers and lucerne. Containing 250g/L bifenthrin, **Astral 250EC insecticide/miticide is registered in clover and lucerne for control of redlegged earth mite at the bare earth stage to give long term protection to seedlings as they emerge.**

LONG RESIDUAL CONTROL

Astral 250EC provides **true bare earth residual** control of redlegged earth mite for up to 60 days when applied at the 40mL/ha rate.

CONTROLS A RANGE OF PASTURE PESTS

Astral 250EC also controls brown pasture looper and blue oat mite and pasture webworm at the 40 mL/ha rate and bryobia mite at the 80 mL/ha rate.

NO USE RESTRICTIONS

Astral 250EC has no specific use restrictions. Farmers and applicators do not require special qualifications or records to be kept.

WITHHOLDING PERIOD

Do not graze pasture treated with Astral 250EC for 4 weeks after application.

Stock removed from treated pasture can be sent for slaughter with no delay.

COMPATIBILITY

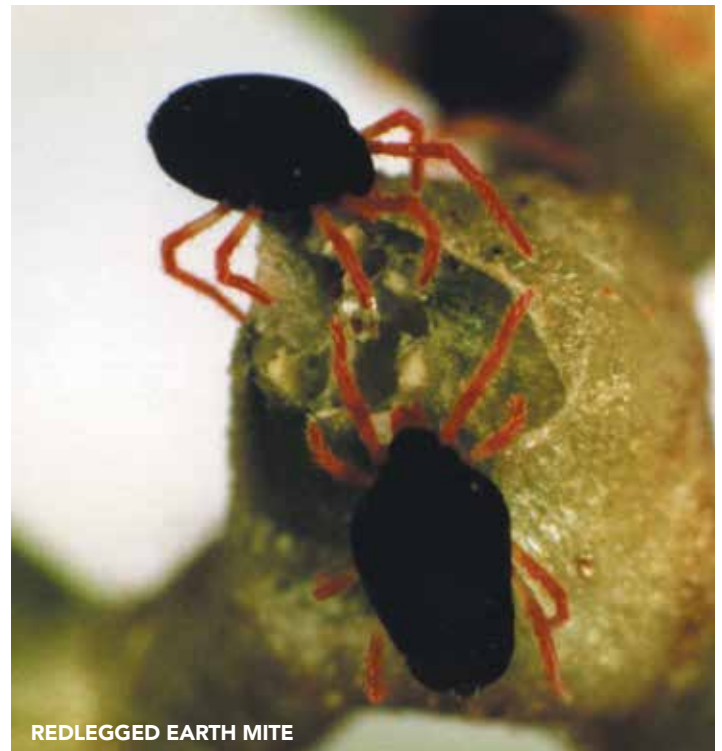
Astral 250EC is compatible with Imidan[®] 150 and Nufarm Dimethoate[®] and with the herbicides Shirquat[™] 250, Simagranz[®], metolachlor, and Rifle[®] 440.

APPLICATION

Apply as a broadcast groundrig application in a total water volume of 50-200 L/ha or by air in a minimum total water volume of 20 L/ha. Apply to bare soil **after** conventional cultivation and sowing or onto well-grazed or sprayed pasture **after** direct drilling. Use the higher rate on heavier infestations and for longer residual protection.

LUCERNE FLEA

Like other synthetic pyrethroid insecticides, Astral 250EC does not control lucerne flea. A tank mix with Imidan or Nufarm Dimethoate or subsequent applications of either will provide lucerne flea control.



REDLEGGED EARTH MITE

DIRECTIONS FOR USE

| CROP | PEST | STATE | RATE | WHP | CRITICAL COMMENTS |
|---|---|------------|-------------|-------------------|---|
| Canola Faba beans Subterranean clover | Redlegged earth mite (<i>Halotydeus destructor</i>) Brown pasture looper (<i>Ciampa arietaria</i>) | All States | 20-40 mL/ha | 4 weeks (grazing) | Apply as a broadcast ground rig application in a total water volume of 50-200L/ha or by air in a minimum total water volume of 20L/ha. Apply to bare soil after conventional cultivation and sowing or onto well grazed or sprayed pasture after direct drilling. Treat infested paddocks after sowing and before or soon after seedling emergence. Use the higher rate on heavier infestations and for longer residual protection. ASTRAL 250EC is compatible with some herbicides. See compatibility statement for details. |
| Clover Barley Field peas Lupins | Blue oat mite (<i>Penthaleus major</i>) Pasture Webworm (<i>Hednota spp</i>) | | 40 mL/ha | | |
| Lucerne Wheat | Bryobia mites (<i>Bryobia spp</i>) | | 80 mL/ha | | |

Not to be used for any purpose, or in any manner, contrary to this label unless authorised under appropriate legislation.



For more information on Astral 250, contact your local Nufarm Area Sales Manager.

nufarm.com.au

The information and recommendations set out in this brochure are no substitute for professional or expert advice and are based on tests and data believed to be reliable at the time of publication. Results may vary, as the use and application of the products is beyond our control and may be subject to climatic, geographical or biological variables, and/or developed resistance. To the maximum extent permitted by law, Nufarm Australia Limited disclaims all warranties of any kind, whether express or implied, including but not limited to any warranty that the information is up-to-date, complete, true, legally compliant, accurate, non-misleading or suitable.

© 2017 Nufarm Australia Ltd. All trademarks (®, ™) are owned by Nufarm Australia Ltd or used under license.