

## INTUITY™ FUNGICIDE



**Unique Nufarm Registration**  
For bean crops

A fungicide for the control of white rot and downy mildew in bulb onions, and sclerotinia in beans.

Now registered for use in beans in addition to existing claims for bulb onions.

### ACTIVE INGREDIENT

250g/L mandestrobin in the form of a suspension concentrate.

### FORMULATION

Liquid

### BENEFITS

- Protectant, curative and anti-sporulant properties - best used as a protectant
- Translaminar with some systemic activity
- Proprietary SC formulation containing latex wetter/sticker
- Low toxicity - 9.1B (Toxic to aquatic organisms)

### WHAT IS INTUITY®?

A new, highly active strobilurin fungicide from Sumitomo Chemical with a unique disease spectrum (especially sclerotinia, monilinia, botrytis) and excellent crop safety.

### PACK SIZE AVAILABLE

5L

### SCLEROTINIA CONTROL IN BEANS

Sclerotinia can spread quickly in bean crops during flowering and pod set, resulting in significant yield loss, particularly under warm, moist conditions.

In Nufarm trials when applied three times at 20% flowering, mid flowering and late flowering in green beans, Intuity has shown to be highly effective at controlling *sclerotinia*. The level of infection compared to untreated plots was significantly reduced from around 20% to less than 3%.

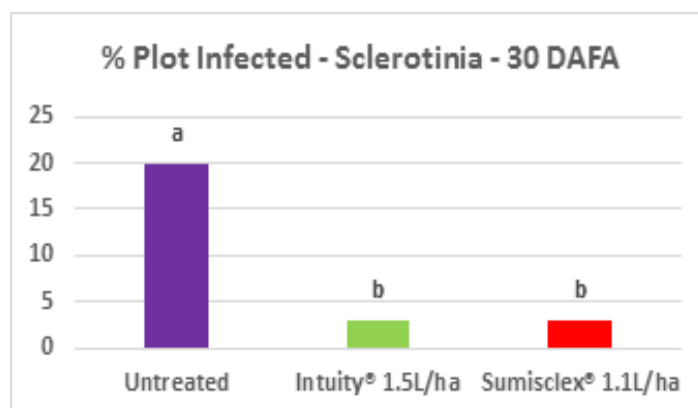


Figure 1: NUNZ1350 - Sclerotinia Control in Beans. 3 applications at 20% flowering, mid flowering, late flowering. 30DAFA = assessments taken 30 days after final application.

## RESISTANCE MANAGEMENT

Good resistance management practices should be followed at all times. Growers may use a maximum of two applications of Intuity or any other Group 11 QoI (quinone outside inhibitor) mode of action fungicide per crop per season. Intuity should be used in a programme as per label instructions with another fungicide which is effective against sclerotinia with a different mode of action, such as Sumisclex® 500SC.

## USE DIRECTIONS FOR BEANS

Crop	Disease	Rate	Note
Beans	<i>Sclerotinia sclerotiorum</i>	1.5L/ha in 500L water	Apply at an early stage of flowering prior to infection when conditions favour disease development. Repeat 7-10 days later. Do NOT apply more than twice per season. Use in a programme with an effective fungicide that has a different mode of action (eg Sumisclex)

For information on other crops refer to the product label or contact your local Nufarm Territory Manager.

## WITHHOLDING PERIOD

Beans: Do not harvest for 7 days after application.

Grazing: Do not graze treated bean crops or feed crop trash to livestock.



Sclerotinia infection in untreated green bean crop.

The information contained is a quick reference only. Always consult the product label before use.

©Intuity is a registered trademark of Sumitomo Chemical Australia Pty Ltd.

©Sumisclex is a registered trademark of Sumitomo Chemical company, Tokyo, Japan.

6 Manu Street, Otahuhu, PO Box 22-407, Auckland 1640, New Zealand

t: 09 270 4150 e: nzinfo@nufarm.com w: nufarm.co.nz