



BLUEBERRIES

PRODUCT GUIDE

Solutions | Expertise | Value



Table of contents

Herbicides

Chateau® EZ.....	2
Credit® Xtreme.....	4
Goal® 2XL.....	6
Statue™.....	8

Fungicides

Botector®.....	10
Quash® SC.....	12

Plant Growth Regulators

Proliant®.....	14
----------------	----

Insecticides

Danitol®.....	16
DiPel®.....	18
Nufarmer Nation.....	20

BLUEBERRY



DORMANT

EARLY
PINK BUD

EARLY BLOOM

FULL BLOOM

PETAL FALL/
FRUIT
DEVELOPMENT

75% BLUE

FALL COLOUR/
POST HARVEST

Chateau EZ
Goal 2XL†
Statue

Chateau EZ
Statue

Quash SC

Botector
Quash SCBotector
Quash SC

Botector

Botector

Botector

Proliant

DiPel

DiPel

DiPel

Danitol
DiPelDanitol
DiPel

†Application should be made at the 2-4 leaf stage of the weeds

Chateau® EZ herbicide is a liquid formulation PPO inhibitor that works as a barrier on the soil surface providing season-long residual control of tough broadleaf and grass weeds.

Chateau® EZ

Benefits

- Long-lasting residual, pre-emergent broadleaf weed control with bonus grass suppression
- Chateau EZ stays where it is sprayed and will not leach or volatilize
- Liquid Group 14 herbicide (PPO inhibitor) works differently than many other commonly used herbicides, helping to manage resistance
- The herbicide barrier cannot be disturbed after moisture activation
- Offers flexible application timing

Registered crops

- | | | |
|------------------------------------|---|--------------------------------|
| • Asparagus | • Established mint (peppermint and spearmint) | • Pome fruit |
| • Blueberry (highbush and lowbush) | • Field pepper | • Potato (Western Canada only) |
| • Broccoli | • Garlic | • Stone fruit |
| • Celery | • Grape | • Strawberry |
| • Dry bulb onion | • Hops | • Succulent shelled pea |
| • Dry bulb shallot | • Nut trees | • Sweet potato |

General usage information

- Moisture is necessary to activate Chateau in soil for weed control (½ inch of rain or irrigation)
- This product will not control emerged weeds unless tank mixed with a labeled burndown herbicide
- Significant crop injury may occur from applications made to poorly drained soils and/or applications made under cool, wet conditions
- Do not apply to farm alleys or roads where traffic may result in treated dust settling onto crops or other desirable vegetation
- Application to non-dormant crops or when soils are flooded after application may result in non-acceptable crop injury, including yield loss
- Use appropriate water volumes to ensure good coverage
- Apply prior to weed emergence
- Undesirable crop injury may occur if Chateau comes in contact with fruit or foliage
- DO NOT tank-mix with Dual II Magnum® or Frontier® Max



Technical information

HERBICIDE GROUP

- Group 14

ACTIVE INGREDIENTS

- flumioxazin 479.2 g/L

PACKAGING

- 4 x 910 mL case

RAINFEST

- Requires ½ inch of rain or irrigation for activation

PCP

- 34036

**NUFARMER
NATION**

SAVE UP TO 10%

Specific crop usage information

WEEDS CONTROLLED/
SUPPRESSED RATE PHI APPLICATION INFORMATION

BLUEBERRY (highbush)

Annual sow-thistle Canada fleabane Common chickweed Common lamb's-quarters Common ragweed Dandelion Eastern black nightshade Green foxtail Green pigweed Hairy nightshade Kochia Redroot pigweed	298 mL/ha (120.6 mL/ac.) Coarse-textured soil with <5% OM 448 mL/ha (181.4 mL/ac.) Medium- and fine-textured soil with <5% OM	7	Do not apply after budbreak unless using hooded or shielded application equipment and applicator can ensure the spray drift will not contact the crop fruit or foliage Do not make more than 2 applications per season Do not make a sequential application within 30 days of the first application Do not apply to highbush blueberries established less than 2 years
---	---	---	---

BLUEBERRY (lowbush)

Canada fleabane Common lamb's-quarters Common ragweed Dandelion Eastern black nightshade Green foxtail Green pigweed Hairy nightshade Kochia Redroot pigweed	149 mL/ha (60.3 mL/ac.) 298 mL/ha (120.6 mL/ac.) Coarse-textured soil with <5% OM 224 mL/ha (90.7 mL/ac.) 448 mL/ha (181.4 mL/ac.) Medium- and fine-textured soil with <5% OM		All applications should be made to dormant lowbush blueberries Do not make more than 2 applications per season Do not make a sequential application within 30 days of the first application Apply Chateau to dormant plants in the sprout year (spring and/or fall) or as a dormant post harvest (fall)
Moss (suppression)	298 mL/ha (120.6 mL/ac.) Coarse-textured soil with <5% OM 448 mL/ha (181.4 mL/ac.) Medium-textured soil with <5% OM		

CANEBERRY

Annual sow-thistle Canada fleabane Common chickweed Common lamb's-quarters Common ragweed Dandelion Eastern black nightshade Green foxtail Green pigweed Hairy nightshade Kochia Redroot pigweed	448 mL/ha (181.4 mL/ac.) Coarse-, medium- and fine-textured soil with <5% OM	7	Do not make more than 2 applications per season Apply as a uniform broadcast application to the ground or as a uniform band Avoid direct or indirect spray contact to foliage and green canes Do not apply over the top of the crop Do not make a sequential application within 30 days of the first application
---	---	---	--

Credit® Xtreme is a patented glyphosate formulation containing Dual-Salt Technology®. Its high-load formulation (540 g/L) provides fast and complete control of troublesome weeds.

Credit® Xtreme

Benefits

- Patented Dual-Salt Technology is a first of its kind innovation
- Provides broad-spectrum weed control through systemic activity
- More active ingredient in less volume – concentrated product means handling less
- Works quickly and mixes easily to make your job easier
- Excellent compatibility with tank-mixes
- Treats up to 60 acres with just one case (30 acres at standard rate)

Registered crops

- | | |
|------------------------------------|--------------|
| • Apple | • Grape |
| • Apricot | • Peach |
| • Asparagus | • Pear |
| • Blueberry (highbush and lowbush) | • Plum |
| • Cherry | • Strawberry |
| • Cranberry | • Sugar beet |
| • Ginseng | |

General usage information

- Credit Xtreme is a non-selective herbicide that will kill or injure plants if it comes in contact with green tissue
- Allow at least 1 day after application before tillage for annual weed control, 3–7 days for perennial weed control
- Extreme care must be exercised to avoid the herbicide coming in contact or drifting onto foliage, suckers or fruit
- A surfactant (Agral 90, AfSurf or Companion) must be added when Credit Xtreme is applied at a rate lower than 0.83 L/ha
- No surfactant is needed when Credit Xtreme is applied at a rate higher than 0.83 L/ha



Technical information

HERBICIDE GROUP

- Group 9

ACTIVE INGREDIENTS

- glyphosate 540 g/L

RAINFAST

- Avoid application when heavy rainfall is in the forecast

PACKAGING

- 2 x 10 L case
- 500 L tote
- Bulk

PCP

- 29888

Specific weed control information

WEEDS CONTROLLED/SUPPRESSED				RATE
Green foxtail Lady's-thumb	Stinkweed Volunteer barley	Volunteer canola Volunteer wheat	Wild mustard Wild oats	0.5 L/ha (0.2 L/ac.)
Flixweed	Kochia	Wild oats		0.67 L/ha (0.27 L/ac.)
Canada fleabane Cleavers Common ragweed Downy brome	Flixweed Giant foxtail Hemp-nettle Lamb's-quarters	Narrow-leaved hawk's-beard Persian darnel Redroot pigweed	Russian thistle Volunteer flax Wild buckwheat	0.83-1.27 L/ha (0.34-0.51 L/ac.)
Annual bluegrass Annual sow-thistle	Crabgrass	Narrow-leaved vetch Prickly lettuce	Shepherd's purse	1.5 L/ha (0.61 L/ac.)

Specific crop usage information

RATE	PHI	APPLICATION INFORMATION
BLUEBERRY (cultivated highbush)		
1.87-3.75 L/ha (0.76-1.52 L/ac.)	30	Use as a directed spray Do not make more than 1 application per season
BLUEBERRY (lowbush)		
1.87-3.75 L/ha (0.76-1.52 L/ac.)		Apply in non-bearing year only during the mid-summer Do not make more than 1 application per season Use a directed spray in mid-summer of the non-bearing year

Goal® 2XL is a pre- and post-emergent Group 14 herbicide to help tackle tough broadleaf weeds in specialty crops.

Goal® 2XL

Benefits

- Contact and residual control of common broadleaf weeds
- Group 14 herbicide that has pre- and post-emergence activity
- Registered on a wide range of specialty crops
- Primocane suppression on raspberries

Registered crops

- Blueberry (highbush)
- Broccoli
- Cabbage
- Cauliflower
- Dry bulb onion
- Red raspberry (British Columbia only)
- Shallot
- Strawberry

General usage information

- Heavy rainfall or heavy irrigation immediately following application to emerged weeds may reduce effectiveness
- Apply when weeds are at the 2–4 leaf stage and actively growing
- Use tank mixtures with herbicides from a different group when such use is permitted
- Rotate the use of Goal 2XL with other herbicide groups to help prevent resistance
- Do not incorporate after application
- For pre-emergent weed control, rain or irrigation is required for activation



Technical information

HERBICIDE GROUP

- Group 14

ACTIVE INGREDIENTS

- Oxyfluorfen 240 g/L

RAINFAST

- Avoid application when heavy rainfall is in the forecast

PACKAGING

- 2 x 9.46 L

PCP

- 24913

Specific crop usage information

WEEDS CONTROLLED/
SUPPRESSED RATE PHI APPLICATION INFORMATION

RED RASPBERRIES

Primocane control	1-2 L/ha (0.404-809 L/ac.)	50	Apply to primocanes which have emerged to 10-15 cm Use the higher rate when the majority of canes are at the max height or when weather conditions before application are hot and dry 2.5 L of Companion or a similar surfactant per 1,000 L of spray solution is recommended Apply to the primocane row with a minimum of 500 L of water/ha (202 L/ac.)
-------------------	----------------------------------	----	---

BLUEBERRY (highbush)

Common purslane Cupped nightshade (potatoweed) Eastern black nightshade (suppression) Field pansy Lady's-thumb (suppression) Lamb's-quarters Maple-leaved goosefoot Oak-leaved goosefoot Redroot pigweed Wild buckwheat Wood Sorrel	1 L/ha (0.404 L/ac.)	50	Apply as a band on either side of the row Reduce the rate according to the band width Band width = row width x broadcast rate = amount of product required Apply post-emergence at the 2-4 leaf stage Apply one ground application per year Do not spray the crop directly
--	-------------------------	----	---

Statue™ is an effective post-emergent grass herbicide registered on fruit and vegetable crops.

Statue™

Benefits

- Superior post-emergent control of annual and perennial grasses
- Excellent crop safety allows for most crops to be treated at all stages so that applications can be targeted to the optimum weed stage
- Systemic action results in exceptional weed control
- Tank-mix flexibility with several herbicide partners
- One case treats 40–80 ac. depending on the crop and the weeds being targeted

Registered crops

- | | |
|------------------------|-------------|
| • Beet (table) | • Potato |
| • Blueberry (highbush) | • Radish |
| • Carrot | • Spinach |
| • Dry onion | • Sunflower |
| • Parsnip | |

General usage information

- Carrier adjuvant must be mixed with Statue herbicide at 0.5% v/v (0.5 L/100 L of water)
- Thorough coverage of the foliage is important for consistent grass control
- Product will be less effective when plants are stressed by lack of moisture, excessive moisture, low temperature and/or low humidity
- Always adhere to the pre-harvest interval for each crop
- Do not use in greenhouses



Technical information

HERBICIDE GROUP

- Group 1

ACTIVE INGREDIENTS

- clethodim 240 g/L

PACKAGING

- 2 x 3 L case (requires matching case of Carrier)
- Carrier (2 x 8 L case) at 0.5% v/v

RAINFAST

- 1 hour

PCP

- 32885
- 30639 (Carrier adjuvant)

Specific weed control information

WEEDS CONTROLLED/SUPPRESSED		LEAF STAGE	RATE	ADJUVANT APPLICATION RATE
Barnyard grass Crabgrass (smooth and large) Fall panicum Foxtail (green, yellow) Persian darnel Proso millet	Quackgrass (suppression) Volunteer canary grass Volunteer cereals (wheat, barley, oats) Volunteer corn Wild oats Witchgrass	2-6	0.19 L/ha (0.08 L/ac.)	0.5% v/v of Carrier (0.5 L/100 L of water)
Quackgrass control**		2-6	0.38 L/ha (0.15 L/ac.)	0.5% v/v of Carrier (0.5 L/100 L of water)

** For adequate control of quackgrass, use a minimum spray volume of 100 L/ha

Specific crop usage information

RATE	PHI	APPLICATION INFORMATION
BLUEBERRY (highbush)		
0.19-0.38 L/ha (0.8-0.15 L/ac.) plus 0.5% v/v of Carrier	14	Ground application only Do not make more than 1 application per season Apply Statue herbicide as a broadcast spray directed to the ground Apply in a minimum spray volume of 100 L/ha

Botector® offers Canadian growers effective biological protection against botrytis and rots in berries, grapes, and a range of fruiting vegetables. With a unique mode of action, Botector works well to compliment conventional programs.

Botector®

Benefits

- Highly reliable and efficacious
- Get outstanding protection against botrytis infections
- Unique mode of action
- A resistance management tool
- NIL harvest withholding
- Protect against botrytis with no delay to your harvest program

Registered crops

- Berries
- Fruiting and leafy vegetables
- Grapes
- Herbs and spices
- Ornamentals

General usage information

- Botector should be applied as a preventative treatment within the recommended growth stages. The product competes for space and nutrients with the pathogen.
- Coverage is critical as Botector is not mobile
- Avoid apply during the hottest part of the day when temperatures exceed 25 °C



Technical information

CHEMICAL CLASS

- N/A – Biological

ACTIVE INGREDIENTS

- *Aureobasidium pullulans*

PACKAGING

- 10 x 1 kg case

RAINFAST

- Remains effective after rain; moderate rainfall even enhances active ingredient growth

PCP

- 31248

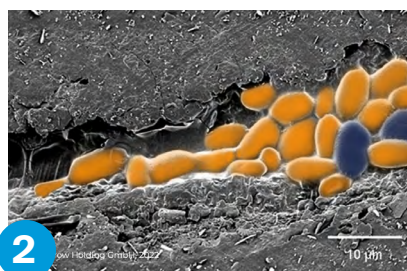
Specific crop usage information

DISEASE CONTROLLED	RATE	APPLICATION INFORMATION
BLUEBERRY (highbush and lowbush)		
Grey mold (<i>Botrytis cinerea</i>)	0.75 kg/ha 500–2,000 L of water/ha	Up to 6 applications per year Repeat applications on a 7–10 day interval up to harvest Preventative, if climate conditions are favourable for infection as well as at first sign of disease onset
Anthracnose fruit rot (<i>Colletotrichum acutatum</i>)	1 kg/ha in 500–2,000 L of water/ha	Up to 6 applications per year Repeat applications on a 7–10 day interval up to harvest Preventative, if climate conditions are favourable for infection as well as at first sign of disease onset

How it works



1 Microscratches on the plant's surface provide a natural entry point to gray mold (*Botrytis cinerea*). These scratches are colonised immediately after applying the highly effective microorganism (*Aureobasidium pullulans*).



2 The rapid proliferation of *Aureobasidium pullulans* consumes available nutrients and inhibits the development of *Botrytis*.



3 The microscratch is sealed by *Aureobasidium pullulans*, which acts as a natural shield and prevents *Botrytis cinerea* from infecting the plant.

Quash® SC fungicide provides broad-spectrum, reliable and flexible disease control at ultra-low use rates.

Quash® SC

Benefits

- Liquid formulation makes Quash SC easier to use and mixes great into solution
- Provides broad-spectrum disease control at low use rates
- Provides good residual activity and movement from the point of application in the plant and outward
- Short pre-harvest interval allows for greater application flexibility
- Does not require a surfactant/adjuvant
- Chemically stable over a wide range of pH and temperatures
- MRLs established for EU and Japan in highbush and lowbush blueberries and potatoes

Registered crops

- Almond
- Blueberry (highbush and lowbush)
- Crop Subgroup 20B, including sunflower
- Currants
- Elderberry
- Hazelnut
- Potato
- Sea buckthorn
- Stone fruit
- Sunflower

General usage information

- Apply prior to infection for preventative control or apply when conditions favour disease development and prior to infection
- Do not make more than 2 sequential applications
- Apply with sufficient water to obtain thorough coverage of plants including blossoms, foliage and/or fruit where applicable



Technical information

CHEMICAL CLASS

- Group 3

ACTIVE INGREDIENTS

- metconazole 480 g/L

PACKAGING

- 10 x 1.14 L case

RAINFAST

- 2 hours

PCP

- 33081

**NUFARMER
NATION**

SAVE UP TO 10%

Specific crop usage information

DISEASE CONTROLLED RATE PHI APPLICATION INFORMATION

BLUEBERRY (highbush and lowbush)

Mummy berry (<i>Monilinia vaccinii-corymbosi</i>)	188 mL/ha (76 mL/ac.)	8	Apply when conditions favour disease development and prior to infection Apply at the green tip stage for mummy berry Make repeat applications on 7 day intervals Do not make more than 3 applications per season Do not make more than 2 sequential applications Do not apply more than 564 mL/ha per season Do not apply by air
--	--------------------------	---	--

BLUEBERRY (highbush and lowbush), ELDERBERRY, SEA BUCKTHORN

Suppression of: Phomopsis twig blight and fruit rot (<i>Phomopsis vaccinii</i>)	188 mL/ha (76 mL/ac.)	8	Apply when conditions favour disease development and prior to infection Apply at pre-bloom for Phomopsis Make repeat applications on 7 day intervals Do not make more than 3 applications per season Do not make more than 2 sequential applications Do not apply more than 564 mL/ha per season Do not apply by air
--	--------------------------	---	--

Proliant® PGR optimizes growth and development along with improving quality of fruits and vegetables.

Proliant® PGR

Benefits

- Supplements the plant's natural GA3 production during slow growth stages
- Temporarily increases plant growth rate
- Increases early season photoradiation capture of the treated crop – more photosynthetic capacity

Registered crops

- Highbush blueberry
- Lowbush blueberry
- Cherry
- Potato seed
- Sour Cherry
- Sweet Cherry

General usage information

- Do not apply to plants under stress
- For optimum effectiveness, thorough spray coverage must be achieved
- For best results, the water pH should be around neutral, and always below 8.5
- Applications should be made under slow drying conditions, this will increase absorption by the plant and optimize effectiveness
- Contact your Nufarm Horticulture Specialist for any usage questions
- We do not recommend tank-mixing this product



Technical information

CHEMICAL CLASS

- Plant Growth Regulator

ACTIVE INGREDIENTS

- Gibberellic Acid (GA3) 40%

PACKAGING

- 10 x 250 g case

RAINFAST

- Delay application if rainfall is imminent

FERTILIZER REGISTRATION

- 2024223S

**NUFARMER
NATION**

SAVE UP TO 10%

Specific crop usage information

OBJECTIVE	RATE	APPLICATION INFORMATION
BLUEBERRY (highbush)		
To improve yield	250–500 g/ha (101–202 g/ac.)	Make a single application of 100–200 g a.i./ha (250–500 g product/ha) in 375–950 L of water/ha The application should be made at full bloom (when 75% of the flowers are fully open)
	250 g/ha (101 g/ac.)	Make 2 applications of 100 g a.i./ha (250 g product/ha) in 375–950 L of water/ha Make the first application at full bloom and the second application within 10–14 days of the first application For Weymouth blueberries, the single application can be delayed up to 2 weeks after bloom to increase the size of “shot” berries
BLUEBERRY, RABBITEYE (lowbush)		
To improve yield	500–1,000 g/ha (202–404 g/ac.)	Make a single application of 200–400 g a.i./ha (500–1,000 g product/ha) in 375–950 L of water/ha The application should be made when most of the flowers are elongated but not yet open
	125–250 g/ha (50–101 g/ac.)	Make 2 applications of 50–100 g a.i./ha (125–250 g product/ha) in 375–950 L of water/ha Make the first application at full bloom and the second application within 10–14 days of the first application

Danitol® insecticide is an effective option to control spotted wing drosophila (SWD), as well as other tough insects in horticulture crops.

Danitol®

Benefits

- Trusted product for control of tough insects including spotted wing drosophila
- Broad label of insects controlled on multiple crops
- Tank-mix flexibility with several products

Registered crops

- Bushberry
- Caneberry
- Cucurbit vegetables
- Fruiting vegetables
- Pome fruit
- Stone fruit
- Succulent peas
- Tree nuts

General usage information

- Always adhere to the limit of applications per crop
- It is recommended that no more than 2 Danitol applications be made per season as part of a resistance management program. Use non-pyrethroid products at other timings to control pests.
- Always refer to and follow the label for re-entry interval (REI) and pre-harvest interval (PHI) for each registered crop
- Do not use in greenhouses
- Follow label instructions regarding restrictions for applications during crop blooming period



Technical information

CHEMICAL CLASS

- Group 3

ACTIVE INGREDIENTS

- fenpropathrin 30.9%

PACKAGING

- 4 x 3.785 L case

RAINFAST

- Avoid application when heavy rainfall is in the forecast

PCP

- 33817

**NUFARMER
NATION**

SAVE UP TO 10%

Specific crop usage information

INSECT CONTROLLED RATE APPLICATION INFORMATION

BUSHBERRY (crop subgroup 13-07B) INCLUDING BLUEBERRY

Blueberry maggot Cherry fruitworm European red mite Japanese beetle Leafhopper Plum curculio Spotted-wing drosophila Two-spotted spider mite Weevils	779-1,169 mL/ha (315-473 mL/ac.)	Ensure uniform spray coverage (minimum 200 L/ha) Make applications beginning when first pest activity is noticed and repeat as needed but not more often than every 14 days For spotted wing drosophila, spray may be directed to the soil to control insects present on fallen berries Do not make more than 2 applications per season Do not apply more than 2.33 L/ha per season
--	-------------------------------------	---

CANEBERRY (crop subgroup 13-07A)

Cherry fruitworm European red mite Japanese beetle Leafhoppers Plum curculio Spotted wing drosophila Two-spotted spider mite Weevils Western raspberry fruitworm	779-1,169 mL/ha (315-473 mL/ac.)	Make applications beginning when first pest activity is noticed Do not exceed 2 applications per year with a minimum application interval of 14 days Do not make more than 2 applications per season Do not apply more than 2.33 L/ha per season For spotted wing drosophila, spray may be directed to the soil to control insects present on fallen berries
--	-------------------------------------	--

Important re-entry information for Danitol

CROP	POST-APPLICATION ACTIVITY	RESTRICTED-ENTRY INTERVAL (REI) AND/OR PRE-HARVEST INTERVAL (PHI)
BUSHBERRY AND CANEBERRY CROP SUBGROUPS	Hand set irrigation	17 days
	Tying/training (raspberry), hand harvesting (all berries excluding lowbush blueberries), mechanically-assisted harvesting (all berries)	15 days
	Hand harvesting, scouting (lowbush blueberry)	13 days
	Scouting (all berries excluding lowbush blueberries), hand weeding (all berries), hand pruning (all berries), bird control (Saskatoon berry), frost control (Saskatoon berry)	7 days
	Mechanical harvesting	3 days
	All other activities	24 hours

DiPel® 2X DF is a leading biological insecticide with a high potency resistance management tool for proven control of Lepidoptera pests in both conventional and organic cropping systems.

DiPel® 2X DF

Benefits

- The most potent Bt insecticide on the market with a unique mode of action, making it an excellent tool for managing resistance
- Immediately deters insects from feeding – death occurs within 1-3 days
- 36 month shelf life when stored at room temperature
- Not harmful to bees or beneficial insects making it a great tool for spring feeding caterpillars
- Very low REI of 4 hours or until spray is dry

Registered crops

- | | | |
|------------------------------------|--------------------------|------------------------------|
| • Apple | • Corn (sweet and field) | • Ornamental and shade trees |
| • Asian radish | • Cranberry | • Parsley |
| • Berries and small fruit | • Ginseng | • Pear |
| • Blueberry (highbush and lowbush) | • Grape | • Potato |
| • Bok choy | • Greenhouse herbs | • Raspberry |
| • Broccoli | • Greenhouse ornamentals | • Sea buckthorn |
| • Cabbage | • Greenhouse vegetables | • Spinach |
| • Cauliflower | • Herbs and spices | • Stone fruit |
| • Chinese broccoli | • Kale | • Sunflower |
| • Chinese cabbage | • Lettuce | • Timothy |
| • Chokecherry | • Mustard greens | • Tobacco |
| • Collards | • Nut crops | • Tomato |
| | | • Turnip greens |

For a complete list of all crops registered and what is included for each crop group refer to the label

General usage information

- OMRI-certified for use in organic production
- Apply when insect pests are small (egg hatch to early instars) before crop damage occurs
- Apply using sufficient water volume for thorough crop coverage
- Repeat at an interval sufficient to maintain control, usually 3-14 days
- Use with a water pH 7 or lower
- **Use with a non-ionic surfactant for hard to wet foliage (such as cabbage or broccoli)**



Technical information

CHEMICAL CLASS

- Group 11

ACTIVE INGREDIENTS

- *Bacillus thuringiensis, var. kurstaki strain ABTS-351 (57%)*

PACKAGING

- 24 x 0.5 kg case
- 5 kg bag

RAINFAST

- Avoid application when heavy rainfall is in the forecast

PCP

- 26508

BIOLOGICAL
INSECTICIDE

Approved for organic production

Specific crop usage information

INSECT CONTROLLED	RATE	APPLICATION INFORMATION
BLUEBERRY (highbush)		
Cherry fruitworm Cranberry fruitworm	1,680 g/ha (680 g/ac.)	Apply at egg hatch, from petal fall through to green fruit stage Use a minimum of 300 L/ha of water and apply with an airblast sprayer Do not make more than 4 applications per season Repeat on a 3-14 day interval if needed
BLUEBERRY (lowbush)		
Blueberry spanworm Chainspotted geometer Rannoch looper	550-1,125 g/ha (222-455 g/ac.)	Do not make more than 4 applications per season Apply using a minimum of 300 L/ha of water Apply when larvae in the first or second instar are present at or above the economic threshold
RED RASPBERRY		
Early season Oblique-banded leafroller	550-1,125 g/ha (222-455 g/ac.)	Refer to the general usage information


Always read and follow the product label for more detailed information on control of weeds, insects or disease, application directions, and use precautions.

Please refer to label for more information including future label expansions that may include new crops, pests and use patterns.

Refer to the product labels for re-entry periods.

Dual Salt Technology® and Statue™ are trademarks of Nufarm Agriculture Inc. Credit® is a registered trademark of Nufarm Limited. Chateau® and Quash® are registered trademarks of Valent U.S.A. LLC. DiPel®, Harvest the Potential™ and Proliant® are trademarks of Valent BioSciences LLC. Goal® is a registered trademark of Nutrichem Co. Ltd. Danitol® is a registered trademark of Sumitomo Chemical Co., Ltd. Botector® is a registered trademark of a member of SAN Group.

All other products are trademarks of their respective companies.

Nufarm Agriculture Inc. is a distributor of Valent Canada Inc. products in Canada. 

NUFARMER NATION

ROW CROP AND HORTICULTURE

Join the 2026 Nufarmer Nation Grower Rewards Program and start saving up to 10% on Nufarm products.

Together, let's build a community of farmers striving to grow more bushels per acre in the most efficient way possible.

This program will go beyond simple rebates. Start saving now, and down the road receive exclusive access to member only events, early access to new technology, and fun Nufarmer Nation merchandise.

HOW IT WORKS.

STEP 1 Purchase any of the Nufarm products listed in the chart below to build purchase level goals*.

STEP 2 Save up to 10% on the Nufarm PAYMENT BRANDS listed in the left hand column in the chart below.

Rewards earned on these PAYMENT BRANDS	PURCHASE LEVEL*			Increase your purchase level with BUILDER PRODUCTS**
	≥ \$10,000	≥ \$20,000	≥ \$40,000	
Bifecta® EZ BlackHawk® Fierce® EZ TriActor® EZ TruSlate® Pro		SAVE 2%	SAVE 5%	Astir® Boost® Brands Credit® Brands Chaperone® Idol® Parasol® Brands ReTain® PGR Rival® EC Statue™ Valtera® EZ
Accede® PGR Blossom Protect™ Buffer Protect NT™ Chateau® EZ Danitol® Excalia® MaxCel® PGR Proliant® PGR Quash® SC	SAVE 3%	SAVE 5%	SAVE 10%	

Products must be purchased between September 1, 2025 and September 30, 2026. No program payments under \$200 will be issued by Nufarm.

*Purchase level based on suggested retail price (SRP).

**Build your purchase level to increase your rewards and receive a higher percentage savings.

JOIN THE NATION.

VISIT [NUFARM.CA](https://www.nufarm.ca) TO REGISTER AND CALCULATE YOUR SAVINGS.