



GRAPES

PRODUCT GUIDE

Solutions | Expertise | Value



Evolving Ag

Table of contents

Herbicides

Chateau® EZ 2
 Credit® Xtreme 4

Fungicides

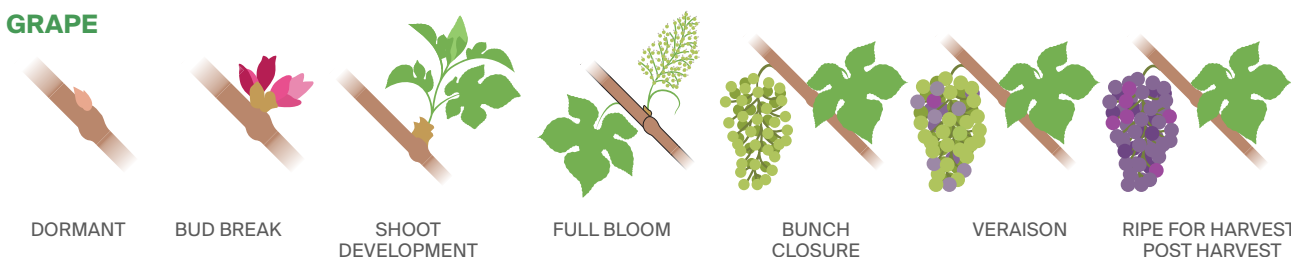
Botector® 6
 Parasol® WG 8

Insecticides

DiPel® 10
 XenTari® 12

 Nufarmer Nation 14

GRAPE



Chateau EZ					Chateau EZ	
Parasol WG	Parasol WG	Parasol WG	Botector Parasol WG	Botector Parasol WG	Botector	
DiPel XenTari	DiPel XenTari	DiPel XenTari	DiPel XenTari	DiPel XenTari		

Chateau® EZ herbicide is a liquid formulation PPO inhibitor that works as a barrier on the soil surface providing season-long residual control of tough broadleaf and grass weeds.

Chateau® EZ

Benefits

- Long-lasting residual, pre-emergent broadleaf weed control with bonus grass suppression
- Chateau EZ stays where it is sprayed and will not leach or volatilize
- Liquid Group 14 herbicide (PPO inhibitor) works differently than many other commonly used herbicides, helping to manage resistance
- The herbicide barrier cannot be disturbed after moisture activation
- Offers flexible application timing

Registered crops

- | | | |
|------------------------------------|----------------------------|--------------------------------|
| • Asparagus | • Established mint | • Pome fruit |
| • Blueberry (highbush and lowbush) | (peppermint and spearmint) | • Potato (Western Canada only) |
| • Broccoli | • Field pepper | • Stone fruit |
| • Celery | • Garlic | • Strawberry |
| • Dry bulb onion | • Grape | • Succulent shelled pea |
| • Dry bulb shallot | • Hops | • Sweet potato |
| | • Nut trees | |

General usage information

- Moisture is necessary to activate Chateau in soil for weed control (½ inch of rain or irrigation)
- This product will not control emerged weeds unless tank mixed with a labeled burndown herbicide
- Significant crop injury may occur from applications made to poorly drained soils and/or applications made under cool, wet conditions
- Do not apply to farm alleys or roads where traffic may result in treated dust settling onto crops or other desirable vegetation
- Application to non-dormant crops or when soils are flooded after application may result in non-acceptable crop injury, including yield loss
- Use appropriate water volumes to ensure good coverage
- Apply prior to weed emergence
- Undesirable crop injury may occur if Chateau comes in contact with fruit or foliage
- DO NOT tank-mix with Dual II Magnum® or Frontier® Max



Technical information

HERBICIDE GROUP

- Group 14

ACTIVE INGREDIENTS

- flumioxazin 479.2 g/L

PACKAGING

- 4 x 910 mL case

RAINFAST

- Requires ½ inch of rain or irrigation for activation

PCP

- 34036

**NUFARMER
NATION**

SAVE UP TO 10%

Specific crop usage information

WEEDS CONTROLLED/
SUPPRESSED RATE PHI APPLICATION INFORMATION

APPLE, GRAPE, NUT TREES, PEAR

<p>Annual sow-thistle Canada fleabane Common chickweed Common lamb's-quarters Common ragweed Dandelion Eastern black nightshade Green foxtail Green pigweed Hairy nightshade Kochia Redroot pigweed</p>	<p>298 mL/ha (120.6 mL/ac.) Coarse-textured soil with <5% OM 448 mL/ha (181.4 mL/ac.) Medium- and fine-textured soil with <5% OM</p>	<p>GENERAL USAGE INFORMATION Chateau should be tank-mixed with glyphosate, present as isopropyl amine or potassium salt, for control of emerged weeds. Refer to the respective tank-mix partner label for rates, additional recommendations, restrictions and precautions. Follow the most restrictive label limitations and precautions of the tank-mix product(s) being used. Only apply to healthy, established trees. Do not apply when plants are under stress from insects, diseases, animals or winter injury, planting shock or any other stresses. Chateau should be applied as a uniform broadcast application to the orchard floor or as a uniform band directed at the base of the trunk Do not make more than 2 applications per season Do not make a sequential application within 30 days of the first application Avoid direct or indirect spray contact to foliage and green bark (including non-barked vines; with the exception of undesirable suckers) Do not apply within 100 m of non-dormant pears</p> <hr/> <p>60 APPLICATION TO POME FRUIT (APPLE AND PEAR) Do not apply to apple or pear trees established less than 1 year, unless protected from spray contact by non-porous wraps, grow tubes or waxed container For apples, do not apply after budbreak unless using hooded or shielded application equipment and applicator can ensure the spray drift will not contact the crop fruit or foliage All applications to pears, or within 100 metres of pears, must be made after final harvest in the fall or 2 months before budbreak in the spring Apply to dormant pears only</p> <hr/> <p>60 APPLICATION TO GRAPES Do not apply to grapes established less than 2 years Do not apply to grapes that are not trellised or staked unless they are free standing New plantings of "own-rooted varieties", such as Concord, should be planted so that all roots are a minimum of 20 cm below the soil surface to be treated. In some situations, this may require hilling soil around newly planted vines so that the settled depth of the hill will be 10-12.5 cm above the vineyard floor. APPLICATION TO JUICE, RAISIN AND WINE GRAPES Do not apply during the period after budbreak through final harvest, unless using shielded application equipment and applicator can ensure the spray drift will not contact the crop fruit or foliage. Shielded applications during this time period should not be made with glyphosate, or products containing glyphosate. APPLICATION TO TABLE GRAPES Chateau may be applied during the period following final harvest in the fall Do not apply after budbreak in the spring</p>
---	---	---

Credit® Xtreme is a patented glyphosate formulation containing Dual-Salt Technology®. Its high-load formulation (540 g/L) provides fast and complete control of troublesome weeds.

Credit® Xtreme

Benefits

- Patented Dual-Salt Technology is a first of its kind innovation
- Provides broad-spectrum weed control through systemic activity
- More active ingredient in less volume – concentrated product means handling less
- Works quickly and mixes easily to make your job easier
- Excellent compatibility with tank-mixes
- Treats up to 60 acres with just one case (30 acres at standard rate)

Registered crops

- | | |
|------------------------------------|--------------|
| • Apple | • Grape |
| • Apricot | • Peach |
| • Asparagus | • Pear |
| • Blueberry (highbush and lowbush) | • Plum |
| • Cherry | • Strawberry |
| • Cranberry | • Sugar beet |
| • Ginseng | |

General usage information

- Credit Xtreme is a non-selective herbicide that will kill or injure plants if it comes in contact with green tissue
- Allow at least 1 day after application before tillage for annual weed control, 3–7 days for perennial weed control
- Extreme care must be exercised to avoid the herbicide coming in contact or drifting onto foliage, suckers or fruit
- A surfactant (Agral 90, AfSurf or Companion) must be added when Credit Xtreme is applied at a rate lower than 0.83 L/ha
- No surfactant is needed when Credit Xtreme is applied at a rate higher than 0.83 L/ha



Technical information

HERBICIDE GROUP

- Group 9

ACTIVE INGREDIENTS

- glyphosate 540 g/L

RAINFAST

- Avoid application when heavy rainfall is in the forecast

PACKAGING

- 2 x 10 L case
- 500 L tote
- Bulk

PCP

- 29888

Specific weed control information

WEEDS CONTROLLED/SUPPRESSED				RATE
Green foxtail Lady's-thumb	Stinkweed Volunteer barley	Volunteer canola Volunteer wheat	Wild mustard Wild oats	0.5 L/ha (0.2 L/ac.)
Flixweed	Kochia	Wild oats		0.67 L/ha (0.27 L/ac.)
Canada fleabane Cleavers Common ragweed Downy brome	Flixweed Giant foxtail Hemp-nettle Lamb's-quarters	Narrow-leaved hawk's-beard Persian darnel Redroot pigweed	Russian thistle Volunteer flax Wild buckwheat	0.83-1.27 L/ha (0.34-0.51 L/ac.)
Annual bluegrass Annual sow-thistle	Crabgrass	Narrow-leaved vetch Prickly lettuce	Shepherd's purse	1.5 L/ha (0.61 L/ac.)

Specific crop usage information

RATE	PHI	APPLICATION INFORMATION
GRAPE		
1.5-8 L/ha (0.61-3.2 L/ac.)	14	Remove all suckers prior to spraying (except for Concord's) Suckering should be completed 2 weeks prior to application Do not apply to vines that are less than 3 years established Do not make more than 3 applications per season

Botector® offers Canadian growers effective biological protection against botrytis and rots in berries, grapes, and a range of fruiting vegetables. With a unique mode of action, Botector works well to compliment conventional programs.

Botector®

Benefits

- Highly reliable and efficacious
- Get outstanding protection against botrytis infections
- Unique mode of action
- A resistance management tool
- NIL harvest withholding
- Protect against botrytis with no delay to your harvest program

Registered crops

- Berries
- Fruiting and leafy vegetables
- Grapes
- Herbs and spices
- Ornamentals

General usage information

- Botector should be applied as a preventative treatment within the recommended growth stages. The product competes for space and nutrients with the pathogen.
- Coverage is critical as Botector is not mobile
- Avoid apply during the hottest part of the day when temperatures exceed 25 °C



Technical information

CHEMICAL CLASS

- N/A – Biological

ACTIVE INGREDIENTS

- *Aureobasidium pullulans*

PACKAGING

- 10 x 1 kg case

RAINFAST

- Remains effective after rain; moderate rainfall even enhances active ingredient growth

PCP

- 31248

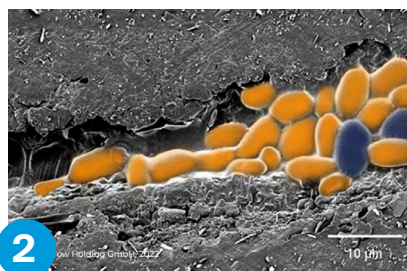
Specific crop usage information

DISEASE CONTROLLED	RATE	APPLICATION INFORMATION
GRAPES		
Grey mold (<i>Botrytis cinerea</i>)	0.5–1 kg/ha in 1,000 L/ha water volume to whole canopy or 0.5–0.75 kg/ha if applying into wine grape bunch zone only The spray volume is to be adapted according to the phenological development stage	Up to 4 applications per year Apply between BBCH 68–89 * (to be applied according to the phenological development stage)

How it works



1 Microscratches on the plant's surface provide a natural entry point to gray mold (*Botrytis cinerea*). These scratches are colonised immediately after applying the highly effective microorganism (*Aureobasidium pullulans*).



2 The rapid proliferation of *Aureobasidium pullulans* consumes available nutrients and inhibits the development of *Botrytis*.



3 The microscratch is sealed by *Aureobasidium pullulans*, which acts as a natural shield and prevents *Botrytis cinerea* from infecting the plant.

Parasol® WG provides growers with consistent, uniform copper coverage and enhanced disease protection through extremely small particle size and a high organic copper load.

Parasol® WG

Benefits

- Easy to handle and mix
- Eliminates clogging of sprayer and booms
- Highly compatible with other products
- Small active particle size to ensure superior coverage

Registered crops

- Bean
- Cranberry
- Cucumber
- Grapes
- Hops
- Pepper
- Potato
- Sugar beet
- Tomato

General usage information

- Use as a preventative/protective fungicide spray
- Use on a 7-14 day interval depending on disease conditions
- Adaptable for spraying with all types of equipment



Technical information

CHEMICAL CLASS

- M1 fungicide

ACTIVE INGREDIENTS

- copper hydroxide 50%

PACKAGING

- 10 kg bag

RAINFAST

- Avoid application when heavy rainfall is in the forecast

PCP

- 29063

Approved for
organic production

Specific crop usage information

DISEASE CONTROLLED	RATE	PHI	APPLICATION INFORMATION
GRAPES			
Black rot (<i>Guignardia bidwellii</i>) Phomopsis rot (<i>Phomopsis viticola</i>) Powdery mildew (<i>Uncinula necator</i> syn. <i>Erysiphe necator</i>) Downy mildew (<i>Plasmopara viticola</i>)	2.24–6.72 kg/ha (0.91–2.7 kg/ac.) in 400 to 600 L water/ha	2	The amount of product applied per ha in concentrate must be the same as the amount applied per ha in dilute spray Ensure crop is thoroughly covered with spray mixture For all diseases, begin application at bud break and repeat at 3 day intervals through the season if needed Do not make more than 8 applications per season Minimum re-treatment interval of 3 days May be applied using vertical boom or air-assisted sprayers. Note: Injury to foliage may occur in copper-sensitive varieties such as: Concord, Delaware, Niagara and Rosette. The addition of hydrated lime at a rate of 0.454–1.36 kg per 0.454 kg of Parasol WG Fungicide may reduce the severity of phytotoxicity. Add lime to the spray tank first and mix thoroughly before adding product.

DiPel® 2X DF is a leading biological insecticide with a high potency resistance management tool for proven control of Lepidoptera pests in both conventional and organic cropping systems.

DiPel® 2X DF

Benefits

- The most potent Bt insecticide on the market with a unique mode of action, making it an excellent tool for managing resistance
- Immediately deters insects from feeding – death occurs within 1-3 days
- 36 month shelf life when stored at room temperature
- Not harmful to bees or beneficial insects making it a great tool for spring feeding caterpillars
- Very low REI of 4 hours or until spray is dry

Registered crops

- | | | |
|------------------------------------|--------------------------|------------------------------|
| • Apple | • Corn (sweet and field) | • Ornamental and shade trees |
| • Asian radish | • Cranberry | • Parsley |
| • Berries and small fruit | • Ginseng | • Pear |
| • Blueberry (highbush and lowbush) | • Grape | • Potato |
| • Bok choy | • Greenhouse herbs | • Raspberry |
| • Broccoli | • Greenhouse ornamentals | • Sea buckthorn |
| • Cabbage | • Greenhouse vegetables | • Spinach |
| • Cauliflower | • Herbs and spices | • Stone fruit |
| • Chinese broccoli | • Kale | • Sunflower |
| • Chinese cabbage | • Lettuce | • Timothy |
| • Chokecherry | • Mustard greens | • Tobacco |
| • Collards | • Nut crops | • Tomato |
| | | • Turnip greens |

For a complete list of all crops registered and what is included for each crop group refer to the label

General usage information

- OMRI-certified for use in organic production
- Apply when insect pests are small (egg hatch to early instars) before crop damage occurs
- Apply using sufficient water volume for thorough crop coverage
- Repeat at an interval sufficient to maintain control, usually 3-14 days
- Use with a water pH 7 or lower
- **Use with a non-ionic surfactant for hard to wet foliage (such as cabbage or broccoli)**



Technical information

CHEMICAL CLASS

- Group 11

ACTIVE INGREDIENTS

- *Bacillus thuringiensis, var. kurstaki strain ABTS-351 (57%)*

PACKAGING

- 24 x 0.5 kg case
- 5 kg bag

RAINFAST

- Avoid application when heavy rainfall is in the forecast

PCP

- 26508



Approved for organic production

Specific crop usage information

INSECT CONTROLLED	RATE	APPLICATION INFORMATION
GRAPE		
Bagworms Grape berry moth	1,125 g/ha (455 g/ac.)	Begin applications after adult flight begins – before egg hatch Use a high water volume Repeat on a 7-10 day interval Do not make more than 6 applications per season
Leafrollers	125-250 g/ 400 L water	Repeat on a 3-14 day interval

XenTari® WG is a leading biological Bt insecticide that controls a broad range of pests with proven control on tomato looper in greenhouses, as well as armyworm and diamondback moth control in conventional and organic operations.

XenTari® WG

Benefits

- Unique mode of action making it an excellent tool for managing resistance
- Immediately deters insects from feeding – death occurs within 1-3 days
- Excellent product to rotate with conventional insecticides
- Not harmful to bees or beneficial insects making it a great tool for spring feeding caterpillars
- Very low REI of 4 hours or until spray is dry

Registered crops

- | | | | |
|---------------------------------------|----------------------------------|----------------------------------|-------------------------------|
| • Artichoke | • Fennel | • Greenhouse low growing berries | • Pome fruit |
| • Beans (dry and succulent) | • Fruiting vegetables | • Greenhouse ornamentals | • Poppy seed |
| • Brassica leafy greens | • Garden beets | • Hare's ear mustard | • Radish (including oriental) |
| • Brassica vegetables (head and stem) | • Ginseng | • Herbs and spices | • Rhubarb |
| • Bulb vegetables | • Grapes | • Hops | • Rutabaga |
| • Camelina | • Greenhouse beans | • Horseradish | • Sea kale |
| • Canola | • Greenhouse caneberries | • Kohlrabi | • Stone fruit |
| • Cardoon | • Greenhouse cucumber | • Leafy greens | • Sugar beets |
| • Celery | • Greenhouse fruiting vegetables | • Mustard seed | • Sweet potatoes |
| • Celtuce | • Greenhouse lettuce | • Oil radish | • Sweet rocket |
| • Chinese celery | | • Outdoor ornamentals | • Tobacco |
| | | | • Tree nuts |
| | | | • Turnip |

For a complete list of all crops registered and what is included for each crop group refer to the label

General usage information

- Apply when insect pests are small (egg hatch to early instars) before crop damage occurs
- Apply in sufficient water volume for thorough crop coverage
- Use with a water pH 7 or lower
- Use a non-ionic surfactant for hard to wet foliage (such as cabbage or broccoli)
- XenTari is OMRI certified for use in organic production



Technical information

CHEMICAL CLASS

- Group 11

ACTIVE INGREDIENTS

- *Bacillus thuringiensis subsp. aizawai, Strain ABTS-1857 (48.1%)*

PACKAGING

- 24 x 500 g case

RAINFAST

- Avoid application when heavy rainfall is in the forecast

PCP

- 31557



Approved for organic production

Specific crop usage information

INSECT CONTROLLED	RATE	APPLICATION INFORMATION
GRAPE		
Grape berry moth Grape leafroller Grape leaffolder Grapeleaf skeletonizer Oblique-banded leafroller Omnivorous leafroller	500-1,000 g/ha (202-404 g/ac.)	Begin applications at "black head stage" of eggs, 2 days before larvae hatch May be repeated if needed every 7-10 days Do not make more than 6 applications per season

Always read and follow the product label for more detailed information on control of weeds, insects or disease, application directions, and use precautions.

Please refer to label for more information including future label expansions that may include new crops, pests and use patterns.


Refer to the product labels for re-entry periods.

Dual Salt Technology® and Parasol® are trademarks of Nufarm Agriculture Inc. Credit® is a registered trademark of Nufarm Limited.

Chateau® is a registered trademark of Valent U.S.A. LLC. DiPel®, Harvest the Potential™ and XenTari® are registered trademarks of Valent BioSciences LLC.

Botector® is a registered trademark of a member of SAN Group.

All other products are trademarks of their respective companies.

Nufarm Agriculture Inc. is a distributor of Valent Canada Inc. products in Canada. 

NUFARMER NATION

ROW CROP AND HORTICULTURE

Join the 2026 Nufarmer Nation Grower Rewards Program and start saving up to 10% on Nufarm products.

Together, let's build a community of farmers striving to grow more bushels per acre in the most efficient way possible.

This program will go beyond simple rebates. Start saving now, and down the road receive exclusive access to member only events, early access to new technology, and fun Nufarmer Nation merchandise.

HOW IT WORKS.

STEP 1 Purchase any of the Nufarm products listed in the chart below to build purchase level goals*.

STEP 2 Save up to 10% on the Nufarm PAYMENT BRANDS listed in the left hand column in the chart below.

Rewards earned on these PAYMENT BRANDS	PURCHASE LEVEL*			Increase your purchase level with BUILDER PRODUCTS**
	≥ \$10,000	≥ \$20,000	≥ \$40,000	
Bifecta® EZ BlackHawk® Fierce® EZ TriActor® EZ TruSlate® Pro		SAVE 2%	SAVE 5%	Astir® Boost® Brands Credit® Brands Chaperone® Idol® Parasol® Brands ReTain® PGR Rival® EC Statue™ Valtera® EZ
Accede® PGR Blossom Protect™ Buffer Protect NT™ Chateau® EZ Danitol® Excalia® MaxCel® PGR Proliant® PGR Quash® SC	SAVE 3%	SAVE 5%	SAVE 10%	

Products must be purchased between September 1, 2025 and September 30, 2026. No program payments under \$200 will be issued by Nufarm.

*Purchase level based on suggested retail price (SRP).

**Build your purchase level to increase your rewards and receive a higher percentage savings.

JOIN THE NATION.

VISIT [NUFARM.CA](https://www.nufarm.ca) TO REGISTER AND CALCULATE YOUR SAVINGS.